

TargetScore: Infer microRNA targets using microRNA-overexpression data and sequence information (Li et al. [2013])

Yue Li

yueli@cs.toronto.edu

October 30, 2017

1 Introduction

MicroRNAs (miRNAs) are known to repress gene expression in mammalian species by forming Watson-Crick (WC) base-pairing to the 3' UTR regions of the target mRNA transcripts (Friedman et al. [2009]). The binding primarily occurs at the 2-7 nucleotide (nt) positions from the 5' end of the miRNA, which is termed as the "seed" and the binding as the "seed match" (Lewis et al. [2003]). MicroRNA regulations have been implicated in numerous developmental and pathogenic processes (Bartel [2009]). Functional characterization of miRNAs depends on precise identification of their corresponding targets. However, accurate identification of miRNA targets remains a challenge with the current state-of-the-art algorithms achieving less than 50% specificity and having poor agreement among them (Sethupathy et al. [2006], Alexiou et al. [2009]). On the other hand, overexpression of miRNA coupled with expression profiling of mRNA by either microarray or RNA-seq has been recently developed (Lim et al. [2005], Arvey et al. [2010]). Consequently, genome-wide comparison of differential gene expression holds a new promise to elucidate the global impact of a specific miRNA regulation without solely relying on sequence information.

We demonstrated that target prediction can be improved by integrating expression fold-change and sequence information such as context score and other orthogonal sequence-based features such as probability of conserved targeting (PCT) (Friedman et al. [2009]) into a probabilistic score (manuscript under peer-review). Our approach differs from previous expression-based target prediction methods in three important aspects. First, our method is able to identify condition-specific miRNA targets. In contrast, well-known methods such as GenMiR++ (Huang et al. [2007]) and GroupMiR (Le and Bar-Joseph [2011]) are based on miRNA-target expression correlation, which requires a large set of the expression profiles measured across various tissues or sample conditions. Second, the proposed method is an unsupervised method such that it does not require training data unlike some other (regression-based) methods (Huang et al. [2007], Le and Bar-Joseph [2011], Liu et al. [2010]). Third, our method operates on the entire gene set to more closely model the overall likelihood rather than only on a pre-filtered set of genes above some arbitrary cutoffs such as TargetScan score (Huang et al. [2007]) or sample variance (Le and Bar-Joseph [2011]).

2 *TargetScore* overview

We describe a novel probabilistic method to miRNA target prediction problem using miRNA-overexpression data and sequence scores Li et al. [2013]. As an overview, each score feature is considered as an independent observed variable as input to a Variational Bayesian-Gaussian Mixture Model (VB-GMM). Bayesian is chosen over maximum-likelihood approach to avoid overfitting. Specifically, given expression fold-change (due to miRNA transfection), we use a three-component VB-GMM to infer down-regulated targets accounting for genes with little or positive fold-change (due to off-target effects (Khan et al. [2009])). Otherwise, two-component VB-GMM is applied to unsigned sequence scores. The parameters for the VB-GMM are optimized using Variational Bayesian Expectation-Maximization (VB-EM) algorithm. Presumably, the mixture component with the largest absolute means of observed negative fold-change or sequence score is associated with miRNA targets and denoted as “target component”. The other components correspond to the “background component”. It follows that inferring miRNA-mRNA interactions most likely explained by the observed data is equivalent to inferring the posterior distribution of the target component given the observed variables. The *targetScore* is computed as the sigmoid-transformed fold-change weighted by the averaged posteriors of target components over all of the features. Please refer to the manual for specific parameter settings:

```
> library(TargetScore)

> ?TargetScore
```

3 *TargetScore* input data

TargetScore operates on overexpression logarithmic fold-changes (logFC) and (optionally) sequence-based scores. In particular, gene expression in treatment (miRNA overexpressed) and (mock) control can be measured by either normalized signal intensities from microarray (e.g., hsa-miR-1 overexpressed in HeLa vs HeLa treated with mock control; GEO accession: GSE11968) or RPKM (reads per kilobase of exon per million mapped reads) by RNA-seq (e.g., hsa-miR-23b from GSE37918). The logFC for each gene is then defined as $\log(\text{treatment}) - \log(\text{control})$. The sequence scores vary depending on the specific sequence-based predictors used. For instance, user can download the pre-computed TargetScan context+ score and PCT (probabilities of conserved targeting) from TargetScan website (http://www.targetscan.org/cgi-bin/targetscan/data_download.cgi?db=vert_61).

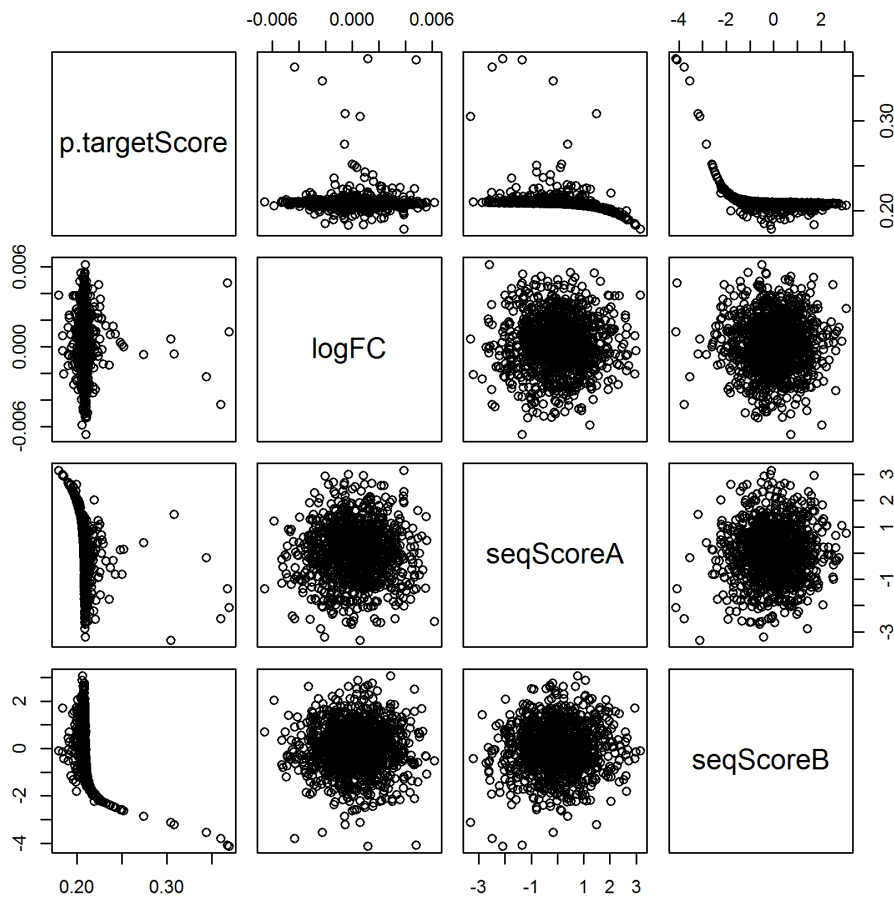
4 A toy example

Suppose we overexpress an miRNA miR-X in HEK293 and measured the expression level of 1100 genes in the (un)treated cell. Comparing with control, 10 genes are down-regulated, 1000 unchanged, 90 up-regulated (possible due to off-target effects) in the transfected HEK293. In addition, the 8 and 20 genes have sequence score A and B sampled from normal distribution with larger negative means (i.e. more likely to be a target). Our task to infer which genes out of the 1100 genes are targets of miRNA miR-X.

```

> trmt <- c(rnorm(10,mean=0.01), rnorm(1000,mean=1), rnorm(90,mean=2)) + 1e3
> ctrl <- c(rnorm(1100,mean=1)) + 1e3
> logFC <- log2(trmt) - log2(ctrl)
> # 8 out of the 10 down-reg genes have prominent seq score A
> seqScoreA <- c(rnorm(8,mean=-2), rnorm(1092,mean=0))
> # 10 down-reg genes plus 10 more genes have prominent seq score B
> seqScoreB <- c(rnorm(20,mean=-2), rnorm(1080,mean=0))
> seqScores <- cbind(seqScoreA, seqScoreB)
> p.targetScore <- targetScore(logFC, seqScores, tol=1e-3)
> # plot relation between targetScore and input variables
> pairs(cbind(p.targetScore, logFC, seqScoreA, seqScoreB))

```



5 Real data on hsa-miR-1 and hsa-miR-17

We are now going to apply TargetScore to predict targets of miRNA hsa-miR-1 and hsa-miR-17 (GEO accession: GSE20745). For hsa-miR-1, we chose from multiple studies on GEO the microarray data that correlate the most with the validated targets (Hsu et al. [2011]). More details

on the data processing and elaborate testing are described in the manuscript (in peer-review).

```
> extdata.dir <- system.file("extdata", package="TargetScore")
> # load test data
> load(list.files(extdata.dir, "\\RData$", full.names=TRUE))
> myTargetScores <- lapply(mytestdata, function(x) targetScore(logFC=x$logF
> names(myTargetScores) <- names(mytestdata)
> valid <- lapply(names(myTargetScores), function(x) table((myTargetScores[
> names(valid) <- names(mytestdata)
> # row pred and col validated targets
> valid
```

```
$`hsa-miR-1`
```

	FALSE	TRUE
FALSE	17290	13
TRUE	1739	135

```
$`hsa-miR-17`
```

	FALSE	TRUE
FALSE	17527	53
TRUE	1464	133

6 TargetScoreData

To automate the pipeline of calculating targetScore, we precompiled and processed to generate miRNA-overexpression fold-changes from 84 Gene Expression Omnibus (GEO) series corresponding to 6 platforms, 77 human cells or tissues, and 112 distinct miRNAs. The end result is a data package: *TargetScoreData*. To our knowledge, this is by far the largest miRNA-perturbation data compendium. Accompanied with the data, we also included in this package the sequence feature scores from TargetScanHuman 6.1 including the context+ score and the probabilities of conserved targeting for each miRNA-mRNA interaction. Thus, the user can use these static sequence-based scores together with user-supplied tissue/cell-specific fold-change due to miRNA overexpression to predict miRNA targets using *TargetScore*.

As a convenience function, we included the package a wrapper function called `getTargetScores` that does the following: (1) given a miRNA ID, obtain fold-change(s) from logFC.imputed matrix or use the user-supplied fold-changes; (2) retrieves TargetScan context score (CS) and PCT (if found); (3) obtain validated targets from the local mirTarBase file; (4) compute targetScore. We apply `getTargetScores` function using miRNA hsa-miR-1, which we know has all three types of data, namely logFC, targetScan context score, and PCT.

```
> library(TargetScoreData)
> library(gplots)
> myTargetScores <- getTargetScores("hsa-miR-1", tol=1e-3, maxiter=200)
```

```

> table((myTargetScores$targetScore > 0.1), myTargetScores$validated) # a v
> # obtain all of targetScore for all of the 112 miRNA (takes time)
>
> logFC.imputed <- get_precomputed_logFC()
> mirIDs <- unique(colnames(logFC.imputed))
>
> # targetScoreMatrix <- mclapply(mirIDs, getTargetScores)
>
> # names(targetScoreMatrix) <- mirIDs

```

7 Use *limma* package to compute logFC as input to TargetScore

TargetScore can be used easily as a downstream pipeline from a well-established differential analysis package such as *limma* (Smyth [2005]). The following code provides a tutorial to obtain targetScore for hsa-miR-205. A brief workflow: (1) download the overexpression data from GEO using getGEO from (Davis and Meltzer [2007]); (2) compute logFC using functions from *limma*; (3) obtain targetScore using function getTargetScores.

```

> # Demo using limma
> # download GEO data for hsa-miR-205
> library(limma)
> library(Biobase)
> library(GEOquery)
> library(gplots)
> gset <- getGEO("GSE11701", GSEMatrix = TRUE, AnnotGPL = TRUE)
> if (length(gset) > 1) idx <- grep("GPL6104", attr(gset, "names")) else id
> gset <- gset[[idx]]
> geneInfo <- fData(gset)
> x <- normalizeVSN(exprs(gset))
> pData(gset)$title
> design <- model.matrix(~0+factor(c(1,1,1,1,2,2,2,2)))
> colnames(design) <- c("preNeg_control", "miR_205_transfect")
> fit <- lmFit(x, design)
> #contrast
> contrast.matrix <- makeContrasts(miR_205_transfect-preNeg_control, levels=
> fit2 <- contrasts.fit(fit, contrast.matrix)
> fit2 <- eBayes(fit2)
> limma_stats <- topTable(fit2, coef=1, number=nrow(fit2))
> limma_stats$gene_symbol <- geneInfo[match(limma_stats$ID, geneInfo$ID), "C
> logFC <- as.matrix(limma_stats$logFC)
> rownames(logFC) <- limma_stats$gene_symbol
> # targetScore
> myTargetScores <- getTargetScores("hsa-miR-205", logFC, tol=1e-3, maxiter=

```

Using the validated targets for hsa-miR-205, we can now evaluate the sensitivity and specificity

of using targetScore and p.value from limma based on receiver operating characteristic (ROC) curve as follows.

```
> library(ggplot2)
> library(scales)
> library(ROCR)
> # ROC
> roceval <- function(myscores, labels_true, method) {
+
+     pred <- prediction(myscores, labels_true)
+
+     perf <- performance( pred, "tpr", "fpr" )
+
+     auc <- unlist(slot(performance( pred, "auc" ), "y.values"))
+
+     fpr <- unlist(slot(perf, "x.values"))
+
+     tpr <- unlist(slot(perf, "y.values"))
+
+     cutoffval <- unlist(slot(perf, "alpha.values"))
+
+     rocdf <- data.frame(x= fpr, y=tpr, cutoff=cutoffval, auc=auc, method=method,
+                         methodScore=sprintf("%s (%s)", method, percent(auc)), cur
+
+     return(rocdf)
+ }
> limma_stats$p.val <- -log10(limma_stats$P.Value)
> limma_stats$p.val[logFC > 0] <- 0
> myeval <- rbind(
+   roceval(myTargetScores$targetScore, myTargetScores$validated, "TargetScore"),
+   roceval(limma_stats$p.val, myTargetScores$validated, "Limma")
> ggroc <- ggplot(myeval, aes(x=x, y=y, color=methodScore)) +
+
+   geom_line(aes(linetype=methodScore), size=0.7) +
+
+   scale_x_continuous("False positive rate", labels=percent) +
+
+   scale_y_continuous("True positive rate", labels=percent) +
+
+   theme(legend.title= element_blank())
> print(ggroc)
>
```

8 Use *DESeq* package to compute logFC as input to TargetScore

We can also combine *DESeq* (Anders and Huber [2010]) with targetScore for RNA-seq miRNA-overexpression data analysis as the following simulated tests.

```
> library(DESeq)
> cds <- makeExampleCountDataSet()
> cds <- estimateSizeFactors(cds)
> cds <- estimateDispersions(cds)
> deseq_stats <- nbinomTest(cds, "A", "B")
> logFC <- deseq_stats$log2FoldChange[1:100]
> # random sequence score
> seqScoreA <- rnorm(length(logFC))
> seqScoreB <- rnorm(length(logFC))
> seqScores <- cbind(seqScoreA, seqScoreB)
> p.targetScore <- targetScore(logFC, seqScores, tol=1e-3)
```

9 Summary

TargetScore is a flexible package that takes logFC and sequence scores as optional inputs to compute the probability of each gene being the target of the overexpressed miRNA. User can compute logFC using the existing packages such as *limma* and *DESeq* as demonstrated above. The function `getTargetScores` provides user a convenient way to obtain targetScore with either pre-computed input (logFC, targetScan context score, and PCT) or supplied logFC.

10 Session Info

```
> sessionInfo()

R version 3.4.2 Patched (2017-10-07 r73498)
Platform: x86_64-w64-mingw32/x64 (64-bit)
Running under: Windows Server 2012 R2 x64 (build 9600)

Matrix products: default

locale:
[1] LC_COLLATE=C
[2] LC_CTYPE=English_United States.1252
[3] LC_MONETARY=English_United States.1252
[4] LC_NUMERIC=C
[5] LC_TIME=English_United States.1252

attached base packages:
[1] stats      graphics  grDevices  utils      datasets  methods   base
```

other attached packages:

```
[1] TargetScore_1.16.0 Matrix_1.2-11      pracma_2.0.7
```

loaded via a namespace (and not attached):

```
[1] compiler_3.4.2  tools_3.4.2      grid_3.4.2       lattice_0.20-35  
[5] quadprog_1.5-5
```

References

Panagiotis Alexiou, Manolis Maragkakis, Giorgos L Papadopoulos, Martin Reczko, and Artemis G Hatzigeorgiou. Lost in translation: an assessment and perspective for computational microRNA target identification. *Bioinformatics (Oxford, England)*, 25(23):3049–3055, December 2009.

Simon Anders and Wolfgang Huber. Differential expression analysis for sequence count data. *Genome Biology*, 11:R106, 2010. doi: 10.1186/gb-2010-11-10-r106. URL <http://genomebiology.com/2010/11/10/R106/>.

Aaron Arvey, Erik Larsson, Chris Sander, Christina S Leslie, and Debora S Marks. Target mRNA abundance dilutes microRNA and siRNA activity. *Molecular systems biology*, 6:1–7, April 2010.

David P Bartel. MicroRNAs: Target Recognition and Regulatory Functions. *Cell*, 136(2):215–233, January 2009.

Sean Davis and Paul S Meltzer. GEOquery: a bridge between the Gene Expression Omnibus (GEO) and BioConductor. *Bioinformatics (Oxford, England)*, 23(14):1846–1847, July 2007.

Robin C Friedman, Kyle Kai-How Farh, Christopher B Burge, and David P Bartel. Most mammalian mRNAs are conserved targets of microRNAs. *Genome Research*, 19(1):92–105, January 2009.

Sheng-Da Hsu, Feng-Mao Lin, Wei-Yun Wu, Chao Liang, Wei-Chih Huang, Wen-Ling Chan, Wen-Ting Tsai, Goun-Zhou Chen, Chia-Jung Lee, Chih-Min Chiu, Chia-Hung Chien, Ming-Chia Wu, Chi-Ying Huang, Ann-Ping Tsou, and Hsien-Da Huang. miRTarBase: a database curates experimentally validated microRNA-target interactions. *Nucleic acids research*, 39 (Database issue):D163–9, January 2011.

Jim C Huang, Quaid D Morris, and Brendan J Frey. Bayesian Inference of MicroRNA Targets from Sequence and Expression Data. *Journal of Computational Biology*, 14(5):550–563, June 2007.

Aly A Khan, Doron Betel, Martin L Miller, Chris Sander, Christina S Leslie, and Debora S Marks. Transfection of small RNAs globally perturbs gene regulation by endogenous microRNAs. *Nature Biotechnology*, May 2009.

- H S Le and Z Bar-Joseph. Inferring interaction networks using the ibp applied to microRNA target prediction. *Advances in Neural Information Processing Systems*, to appear, 2011.
- Benjamin P Lewis, I-hung Shih, Matthew W Jones-Rhoades, David P Bartel, and Christopher B Burge. Prediction of mammalian microRNA targets. *Cell*, 115(7):787–798, December 2003.
- Yue Li, Anna Goldenberg, Ka-Chun Wong, and Zhaolei Zhang. A probabilistic approach to explore human mirna targetome by integrating mirna-overexpression data and sequence information. *Bioinformatics*, 2013. doi: 10.1093/bioinformatics/btt599. URL <http://bioinformatics.oxfordjournals.org/content/early/2013/10/17/bioinformatics.btt599.abstract>.
- Lee P Lim, Nelson C Lau, Philip Garrett-Engele, Andrew Grimson, Janell M Schelter, John Castle, David P Bartel, Peter S Linsley, and Jason M Johnson. Microarray analysis shows that some microRNAs downregulate large numbers of target mRNAs. *Nature*, 433(7027):769–773, February 2005.
- Hui Liu, Dong Yue, Yidong Chen, Shou-Jiang Gao, and Yufei Huang. Improving performance of mammalian microRNA target prediction. *BMC Bioinformatics*, 11(1):476, 2010.
- Praveen Sethupathy, Molly Megraw, and Artemis G Hatzigeorgiou. A guide through present computational approaches for the identification of mammalian microRNA targets. *Nature Methods*, 3(11):881–886, October 2006.
- Gordon K Smyth. Limma: linear models for microarray data. In R. Gentleman, V. Carey, S. Dudoit, R. Irizarry, and W. Huber, editors, *Bioinformatics and Computational Biology Solutions Using R and Bioconductor*, pages 397–420. Springer, New York, 2005.