

gwascat: structuring and querying the NHGRI GWAS catalog

VJ Carey*

October 13, 2014

Contents

1	Introduction	2
1.1	Installation	2
1.2	Attachment and access to documentation	2
1.3	Illustrations: computing	2
2	Some visualizations	3
2.1	Basic Manhattan plot	3
2.2	Annotated Manhattan plot	4
2.3	Integrative view of potential genetic determinants	5
3	SNP sets and trait sets	6
3.1	SNPs by name	6
3.2	Traits by genomic location	7
4	Counting alleles associated with traits	9
5	Imputation to unobserved loci	11
6	Formal management of trait vocabularies	13
6.1	Diseases: Disease Ontology	13
6.2	Other phenotypic traits: Human Phenotype Ontology	15
7	CADD scores	16
8	Appendix: Adequacy of location annotation	17

*Generous support of Robert Gentleman and the Computational Biology Group of Genentech, Inc. is gratefully acknowledged

1 Introduction

NHGRI maintains and routinely updates a database of selected genome-wide association studies. This document describes R/Bioconductor facilities for working with contents of this database.

1.1 Installation

The package can be installed using Bioconductor's *BiocInstaller* package, with the sequence

```
library(BiocInstaller)
biocLite("gwascats")
```

1.2 Attachment and access to documentation

Once the package has been installed, use `library(gwascats)` to obtain interactive access to all the facilities. After executing this command, use `help(package="gwascats")` to obtain an overview. The current version of this vignette can always be accessed at www.bioconductor.org, or by suitably navigating the web pages generated with `help.start()`.

1.3 Illustrations: computing

Available functions are:

```
> library(gwascats)
> objects("package:gwascats")

[1] "bindcadd_snv"      "chklocs"          "DataFrame"
[4] "elementMetadata"  "getRsids"          "getTraits"
[7] "gwcex2gviz"        "impute.snps"       "locs4trait"
[10] "makeCurrentGwascats" "match"             "mcols"
[13] "mcols<-"           "obo2graphNEL"      "overlapsAny"
[16] "ranges"            "riskyAlleleCount"  "seqnames"
[19] "show"              "subsetByChromosome" "subsetByTraits"
[22] "topTraits"         "traitsManh"        "values"
```

The extended `GRanges` instance with all SNP-disease associations is obtained as follows, using the hg19 genome build (hg38-based ranges are also available as `gwrngs38`).

```
> data(gwrngs19)
```

To determine the most frequently occurring traits:

```
> topTraits(gwrngs19)
```

Obesity-related traits	IgG glycosylation	Height
952	699	521
Rheumatoid arthritis	Type 2 diabetes	Crohn's disease
284	233	218
HDL cholesterol	Multiple sclerosis	LDL cholesterol
201	177	166
Breast cancer		
159		

For a given trait, obtain a GRanges with all recorded associations; here only three associations are shown:

```
> subsetByTraits(gwrngs19, tr="LDL cholesterol")[1:3]
```

gwasloc instance with 3 records and 35 attributes per record.

Extracted: Mon Sep 8 13:08:13 2014

Genome: hg19

Excerpt:

GRanges object with 3 ranges and 3 metadata columns:

	seqnames	ranges	strand	Disease.Trait	SNPs
	<Rle>	<IRanges>	<Rle>	<character>	<character>
1236	chr19	[11202306, 11202306]	*	LDL cholesterol	rs6511720
1237	chr2	[44072576, 44072576]	*	LDL cholesterol	rs4299376
1238	chr9	[136155000, 136155000]	*	LDL cholesterol	rs9411489
	p.Value				
	<numeric>				
1236	3e-115				
1237	4e-72				
1238	2e-41				

seqinfo: 23 sequences from hg19 genome

2 Some visualizations

2.1 Basic Manhattan plot

A basic Manhattan plot is easily constructed with the ggbio package facilities. Here we confine attention to chromosomes 4:6. First, we create a version of the catalog with $-\log_{10}p$ truncated at a maximum value of 25.

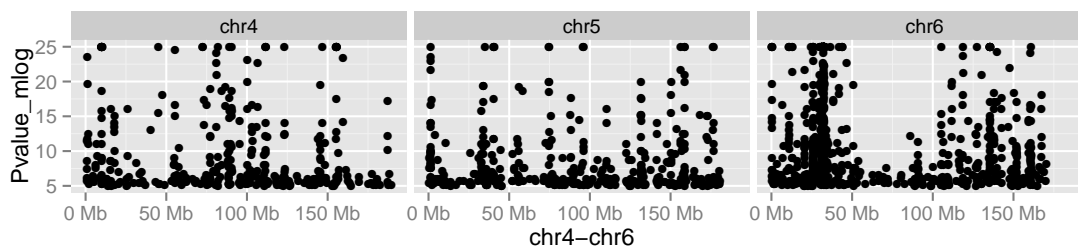
```
> gwtrunc = gwrngs19
> mlpv = mcols(gwrngs19)$Pvalue_mlog
> mlpv = ifelse(mlpv > 25, 25, mlpv)
```

```

> mcols(gwtrunc)$Pvalue_mlog = mlpv
> gwlit = gwtrunc[ which(as.character(seqnames(gwtrunc)) %in% c("chr4", "chr5", "chr6")) ]
> library(ggbio)
> mlpv = mcols(gwlit)$Pvalue_mlog
> mlpv = ifelse(mlpv > 25, 25, mlpv)
> mcols(gwlit)$Pvalue_mlog = mlpv

> methods::bind_activation(FALSE)
> autoplot(gwlit, geom="point", aes(y=Pvalue_mlog), xlab="chr4-chr6")

```



2.2 Annotated Manhattan plot

A simple call permits visualization of GWAS results for a small number of traits. Note the defaults in this call.

```

> args(traitsManh)

```

```

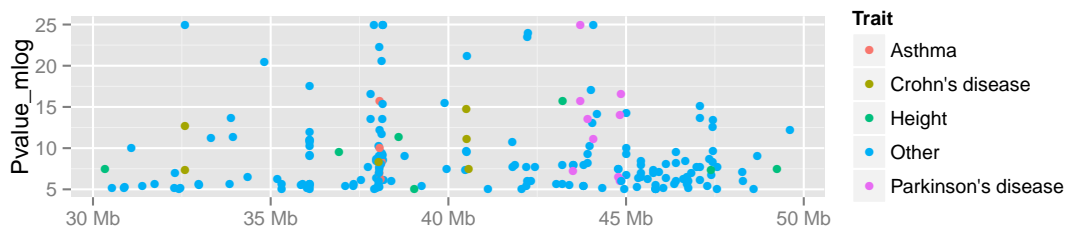
function (gwr, selr = GRanges(seqnames = "chr17", IRanges(3e+07,
  5e+07)), traits = c("Asthma", "Parkinson's disease", "Height",
  "Crohn's disease"), truncmlp = 25, ...)
NULL

```

```

> traitsManh(gwtrunc)

```



2.3 Integrative view of potential genetic determinants

The following chunk uses GFF3 data on eQTL and related phenomena distributed at the GBrowse instance at eqtl.uchicago.edu. A request for all information at 43-45 Mb was made on 2 June 2012, yielding the GFF3 referenced below. Of interest are locations and scores of genetic associations with DNaseI hypersensitivity (scores identifying dsQTL, see Degner et al 2012).

```
> gffpath = system.file("gff3/chr17_43000000_45000000.gff3", package="gwascat")
> library(rtracklayer)
> c17tg = import(gffpath, asRangedData=FALSE)
```

We make a Gviz DataTrack of the dsQTL scores.

```
> c17td = c17tg[ which(mcols(c17tg)$type == "Degner_dsQTL") ]
> library(Gviz)
> dsqs = DataTrack( c17td, chrom="chr17", genome="hg19", data="score",
+   name="dsQTL")
```

We start the construction of the graph here.

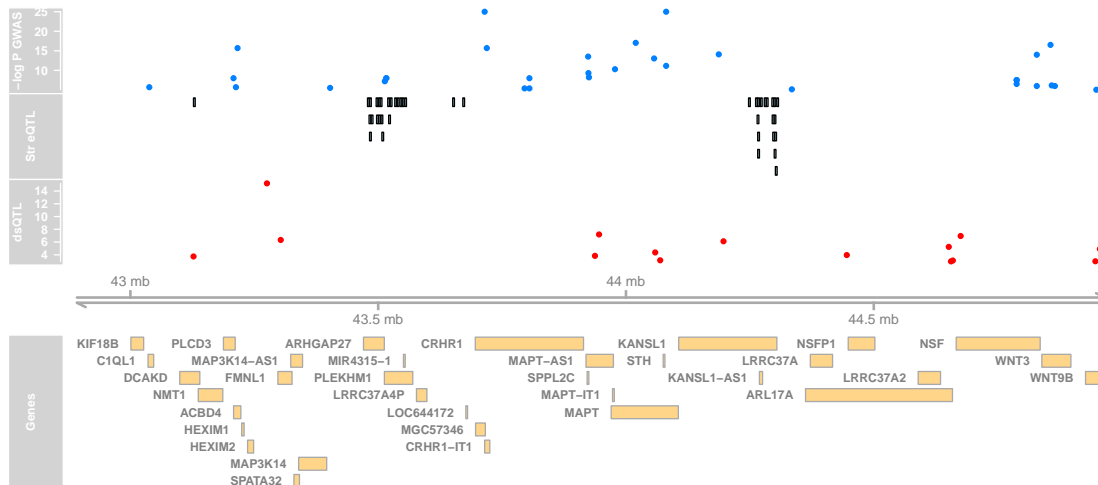
```
> g2 = GRanges(seqnames="chr17", IRanges(start=4.3e7, width=2e6))
> basic = gwcex2gviz(basegr = gwrngs19, contextGR=g2, plot.it=FALSE)
```

We also collect locations of eQTL in the Stranger 2007 multipopulation eQTL study.

```
> c17ts = c17tg[ which(mcols(c17tg)$type == "Stranger_eqtl") ]
> eqloc = AnnotationTrack(c17ts, chrom="chr17", genome="hg19", name="Str eQTL")
> displayPars(eqloc)$col = "black"
> displayPars(dsqs)$col = "red"
> integ = list(basic[[1]], eqloc, dsqs, basic[[2]], basic[[3]])
```

Now use Gviz.

```
> plotTracks(integ)
```



3 SNP sets and trait sets

3.1 SNPs by name

We can regard the content of a SNP chip as a set of SNP, referenced by name. The `pd.genomewidesnp.6` package describes the Affymetrix SNP 6.0 chip. We can determine which traits are associated with loci interrogated by the chip as follows. We work with a subset of the 1 million loci for illustration.

The `locon6` data frame has information on 10000 probes, acquired through the following code (not executed here to reduce dependence on the `pd.genomewidesnp.6` package, which is very large).

```
> library(pd.genomewidesnp.6)
> con = pd.genomewidesnp.6@getdb()
> locon6 = dbGetQuery(con,
+   "select dbsnp_rs_id, chrom, physical_pos from featureSet limit 10000")
```

Instead use the serialized information:

```
> data(locon6)
> rson6 = as.character(locon6[[1]])
> rson6[1:5]
```

```
[1] "rs2887286" "rs1496555" "rs41477744" "rs3890745" "rs10492936"
```

We subset the GWAS ranges structure with rsids that are common to both the chip and the GWAS catalog. We then tabulate the diseases associated with the common loci.

```
> intr = gwrngs19[ intersect(getRsids(gwrngs19), rson6) ]
> sort(table(getTraits(intr)), decreasing=TRUE)[1:10]
```

```

                                Height
                                3
      Select biomarker traits
                                3
                Dental caries
                                2
                Homocysteine levels
                                2
                IgG glycosylation
                                2
Immune reponse to smallpox (secreted IFN-alpha)
                                2
                Metabolic traits
                                2
```

Ulcerative colitis	2
Age-related macular degeneration	1
Aging traits	1

3.2 Traits by genomic location

We will assemble genomic coordinates for SNP on the Affymetrix 6.0 chip and show the effects of identifying the trait-associated loci with regions of width 1000bp instead of 1bp.

The following code retrieves coordinates for SNP interrogated on 10000 probes (to save time) on the 6.0 chip, and stores the results in a GRanges instance.

```
> gr6.0 = GRanges(seqnames=ifelse(is.na(locon6$chrom),0,locon6$chrom),
+               IRanges(ifelse(is.na(locon6$phys),1,locon6$phys), width=1))
> mcols(gr6.0)$rsid = as.character(locon6$db SNP_rs_id)
> seqlevels(gr6.0) = paste("chr", seqlevels(gr6.0), sep="")
```

Here we compute overlaps with both the raw disease-associated locus addresses, and with the locus address ± 500 bp.

```
> ag = function(x) as(x, "GRanges")
> ovraw = suppressWarnings(subsetByOverlaps(ag(gwrngs19), gr6.0))
> length(ovraw)

[1] 96

> ovaug = suppressWarnings(subsetByOverlaps(ag(gwrngs19+500), gr6.0))
> length(ovaug)

[1] 155
```

To acquire the subset of the catalog to which 6.0 probes are within 500bp, use:

```
> rawrs = mcols(ovraw)$SNPs
> augrs = mcols(ovaug)$SNPs
> gwrngs19[augrs]
```

gwasloc instance with 155 records and 35 attributes per record.

Extracted: Mon Sep 8 13:08:13 2014

Genome: hg19

Excerpt:

GRanges object with 5 ranges and 3 metadata columns:

	seqnames	ranges	strand		Disease.Trait	SNPs
	<Rle>	<IRanges>	<Rle>		<character>	<character>
202	chr10	[50097819, 50097819]	*		Rheumatoid arthritis	rs2671692
257	chr10	[61380482, 61380482]	*		Mean arterial pressure (alcohol consumption interaction)	rs10826334
257	chr10	[61380482, 61380482]	*		Mean arterial pressure (alcohol consumption interaction)	rs10826334
257	chr10	[61380482, 61380482]	*		Mean arterial pressure (alcohol consumption interaction)	rs10826334
678	chr1	[95029581, 95029581]	*		QRS duration in Tripanosoma cruzi seropositivity	rs1146509
	p.Value					
	<numeric>					
202	3e-09					
257	9e-07					
257	9e-07					
257	9e-07					
678	6e-06					

seqinfo: 23 sequences from hg19 genome

Relaxing the intersection criterion in this limited case leads to a larger set of traits.

```
> setdiff( getTraits(gwrngs19[augrs]), getTraits(gwrngs19[rawrs]) )
```

- [1] "Mean arterial pressure (alcohol consumption interaction)"
- [2] "QRS duration in Tripanosoma cruzi seropositivity"
- [3] "Functional impairment in major depressive disorder, bipolar disorder and schizophr"
- [4] "Periodontitis (CDC/AAP)"
- [5] "Odorant perception (β-damascenone)"
- [6] "Bronchopulmonary dysplasia"
- [7] "Self-reported allergy"
- [8] "Migraine"
- [9] "Reading and spelling"
- [10] "Adverse response to chemotherapy (neutropenia/leucopenia) (carboplatin)"
- [11] "Body mass index"
- [12] "Response to taxane treatment (docetaxel)"
- [13] "Neuroblastoma"
- [14] "Response to amphetamines"
- [15] "Lentiform nucleus volume "


```

[16] "Venous thromboembolism"
[17] "Fasting glucose-related traits (interaction with BMI)"
[18] "Response to angiotensin II receptor blocker therapy"
[19] "Capecitabine sensitivity"
[20] "Response to hepatitis C treatment"
[21] "Response to antidepressant treatment"
[22] "Phospholipid levels (plasma)"
[23] "Endometrial cancer"
[24] "MRI atrophy measures"
[25] "Self-rated health"
[26] "Neonatal lupus"
[27] "Crohn's disease"
[28] "Optic nerve measurement (cup area)"
[29] "Response to statin therapy"
[30] "Tanning"
[31] "Obesity"
[32] "Osteonecrosis of the jaw"
[33] "Hip geometry"
[34] "Parkinson's disease"

```

4 Counting alleles associated with traits

We can use `riskyAlleleCount` to count risky alleles enumerated in the GWAS catalog. This particular function assumes that we have genotyped at the catalogued loci. Below we will discuss how to impute from non-catalogued loci to those enumerated in the catalog.

```

> data(gg17N) # translated from GGdata chr 17 calls using ABmat2nuc
> gg17N[1:5,1:5]

```

	rs6565733	rs1106175	rs17054921	rs8064924	rs8070440
NA06985	"G/G"	"A/G"	"C/C"	"G/G"	"G/G"
NA06991	"G/G"	"A/A"	"C/C"	"G/G"	"G/G"
NA06993	"G/G"	"A/A"	"C/C"	"G/G"	"G/G"
NA06994	"A/G"	"A/G"	"C/C"	"A/G"	"G/G"
NA07000	"G/G"	"A/A"	"C/C"	"G/G"	"G/G"

This function can use genotype information in the A/B format, assuming that B denotes the alphabetically later nucleotide. Because we have direct nucleotide coding in our matrix, we set the `matIsAB` parameter to `false` in this call.

```

> h17 = riskyAlleleCount(gg17N, matIsAB=FALSE, chr="ch17",
+   gwwl = gwrngs19)
> h17[1:5,1:5]

```

	rs7217319	rs684232	rs623323	rs2360111	rs11078597
NA06985	0	0	2	0	0
NA06991	0	0	2	1	0
NA06993	0	0	2	2	0
NA06994	0	0	2	2	1
NA07000	0	0	2	0	0

```
> table(as.numeric(h17))
```

```

  0    1    2
18792 7811 5977

```

It is of interest to bind the counts back to the catalog data.

```

> gwr = gwrngs19
> gwr = gwr[colnames(h17),]
> mcols(gwr) = cbind(mcols(gwr), DataFrame(t(h17)))
> sn = rownames(h17)
> gwr[,c("Disease.Trait", sn[1:4])]

```

gwasloc instance with 362 records and 5 attributes per record.

Extracted: Mon Sep 8 13:08:13 2014

Genome: hg19

Excerpt:

GRanges object with 5 ranges and 5 metadata columns:

	seqnames	ranges	strand	Disease.Trait
	<Rle>	<IRanges>	<Rle>	<character>
11356	chr17 [38924,	38924]	*	AIDS progression
3420	chr17 [618965,	618965]	*	Prostate cancer
5348	chr17 [700020,	700020]	*	Type 2 diabetes
8700	chr17 [831667,	831667]	*	Economic and political preferences
7331	chr17 [1618363,	1618363]	*	Serum albumin level
	NA06985	NA06991	NA06993	NA06994
	<integer>	<integer>	<integer>	<integer>
11356	0	0	0	0
3420	0	0	0	0
5348	2	2	2	2
8700	0	1	2	2
7331	0	0	0	1

seqinfo: 23 sequences from hg19 genome

Now by programming on the metadata columns, we can identify individuals with particular risk profiles.

5 Imputation to unobserved loci

If we lack information on a specific locus s , but have reasonably dense genotyping on a subject, population genetics may allow a reasonable guess at the genotype at s for this subject. Many algorithms for genotype imputation have been proposed. Here we use a very simple approach due to David Clayton in the *snpStats* package.

We use the “low coverage” 1000 genomes genotypes for the CEU (central European) HapMap cohort as a base for constructing imputation rules. We focus on chromosome 17 for illustration.

The base data are

```
> data(low17)
> low17
```

```
A SnpMatrix with 60 rows and 196327 columns
Row names: NA06985 ... NA12874
Col names: chr17:1869 ... chr17:78654554
```

A somewhat sparser set of genotypes (HapMap phase II, genomewide 4 million loci) on chromosome 17 is archived as *g17SM*. This has a compact SnpMatrix encoding of genotypes.

```
> data(g17SM)
> g17SM
```

```
A SnpMatrix with 90 rows and 89701 columns
Row names: NA06985 ... NA12892
Col names: rs6565733 ... rs4986109
```

For a realistic demonstration, we use the subset of these loci that are present on the Affy 6.0 SNP array.

```
> data(gw6.rs_17)
> g17SM = g17SM[, intersect(colnames(g17SM), gw6.rs_17)]
> dim(g17SM)
```

```
[1] 90 20359
```

The base data were used to create a set of rules allowing imputation from genotypes in the sparse set to the richer set. Some rules involve only a single locus, some as many as 4. The construction of rules involves tuning of modeling parameters. See *snp.imputation* in *snpStats* for details.

```
> if (!exists("rules_6.0_1kg_17")) data(rules_6.0_1kg_17)
> rules_6.0_1kg_17[1:5,]
```

```
chr17:1869 ~ rs9915268+rs11247571+rs9895105+rs6598837 (MAF = 0.06666667, R-squared =
chr17:2220 ~ rs4790867+rs10454094+rs2586238+rs7207284 (MAF = 0.125, R-squared = 0.706
chr17:6689 ~ rs4424950+rs4790867+rs7225087+rs11658347 (MAF = 0.125, R-squared = 0.592
rs34663111 ~ rs11658079+rs1609550+rs4985594+rs9788983 (MAF = 0.1166667, R-squared = 0
rs62054999 ~ rs17609440+rs2740351+rs2589492+rs16956017 (MAF = 0.125, R-squared = 0.26
```

The summary of rules shows the degree of association between the predictors and predictands in terms of R^2 . Many potential targets are not imputed.

```
> summary(rules_6.0_1kg_17)
```

	SNPs used				
R-squared	1 tags	2 tags	3 tags	4 tags	<NA>
[0,0.1)	655	785	276	56	0
[0.1,0.2)	7	664	926	868	0
[0.2,0.3)	0	158	916	3054	0
[0.3,0.4)	0	28	411	5104	0
[0.4,0.5)	0	20	203	6365	0
[0.5,0.6)	0	21	121	6052	0
[0.6,0.7)	0	29	104	5623	0
[0.7,0.8)	0	54	108	6330	0
[0.8,0.9)	0	141	225	9506	0
[0.9,0.95)	652	700	572	8056	0
[0.95,0.99)	7274	1689	1388	6158	0
[0.99,1]	33660	1353	2326	10152	0
<NA>	0	0	0	0	53601

The overlap between the 6.0-resident g17SM loci and the catalog is

```
> length(intersect(colnames(g17SM), mcols(gwrngs19)$SNPs))
```

```
[1] 149
```

The new expected B allele counts are

```
> exg17 = impute.snps(rules_6.0_1kg_17, g17SM)
```

The number of new loci that coincide with risk loci in the catalog is:

```
> length(intersect(colnames(exg17), mcols(gwrngs19)$SNPs))
```

```
[1] 226
```

6 Formal management of trait vocabularies

6.1 Diseases: Disease Ontology

The Disease Ontology project Osborne et al. (2009) formalizes a vocabulary for human diseases. Bioconductor's DO.db package is a curated representation.

```
> library(DO.db)
> DO()
```

Quality control information for DO:

This package has the following mappings:

```
DOANCESTOR has 6343 mapped keys (of 6344 keys)
DOCHILDREN has 1787 mapped keys (of 6344 keys)
DOOBSOLETE has 2383 mapped keys (of 2383 keys)
DOOFFSPRING has 1787 mapped keys (of 6344 keys)
DOPARENTS has 6343 mapped keys (of 6344 keys)
DOTERM has 6344 mapped keys (of 6344 keys)
```

Additional Information about this package:

```
DB schema: DO_DB
DB schema version: 1.0
```

All tokens of the ontology are acquired via:

```
> alltob = unlist(mget(mappedkeys(DOTERM), DOTERM))
> allt = sapply(alltob, Term)
> allt[1:5]
```

DOID:0000000	DOID:0001816
"gallbladder disease"	"angiosarcoma"
DOID:0002116	DOID:0014667
"pterygium"	"disease of metabolism"
DOID:0050004	
"seminal vesicle acute gonorrhea"	

Direct mapping from disease trait tokens in the catalog to this vocabulary succeeds for a modest proportion of records.

```

> cattra = mcols(gwrngs19)$Disease.Trait
> mat = match(tolower(cattra), tolower(allt))
> catDO = names(allt)[mat]
> na.omit(catDO)[1:50]

[1] "DOID:7148" "DOID:7148" "DOID:7148" "DOID:7148" "DOID:7148" "DOID:7148"
[7] "DOID:7148" "DOID:7148" "DOID:7148" "DOID:7148" "DOID:7148" "DOID:7148"
[13] "DOID:7148" "DOID:7148" "DOID:7148" "DOID:7148" "DOID:7148" "DOID:7148"
[19] "DOID:7148" "DOID:7148" "DOID:7148" "DOID:7148" "DOID:7148" "DOID:7148"
[25] "DOID:7148" "DOID:7148" "DOID:7148" "DOID:7148" "DOID:7148" "DOID:7148"
[31] "DOID:7148" "DOID:7148" "DOID:7148" "DOID:7148" "DOID:7148" "DOID:7148"
[37] "DOID:7148" "DOID:7148" "DOID:7148" "DOID:7148" "DOID:7148" "DOID:7148"
[43] "DOID:7148" "DOID:7148" "DOID:7148" "DOID:7148" "DOID:7148" "DOID:7148"
[49] "DOID:7148" "DOID:7148"

> mean(is.na(catDO))

[1] 0.7945404

```

Approximate matching of unmatched tokens can proceed by various routes. Some traits are not diseases, and will not be mappable using Disease Ontology. However, consider

```

> unique(cattra[is.na(catDO)])[1:20]

[1] "Resistin levels "
[2] "Asthma and hay fever"
[3] "Lipid traits"
[4] "Musician's dystonia"
[5] "Cognitive decline (age-related)"
[6] "Type 2 diabetes"
[7] "Chronic hepatitis C infection"
[8] "Thrombin generation potential phenotypes"
[9] "Chronic kidney disease"
[10] "Glomerular filtration rate"
[11] "Periodontal disease-related phenotypes"
[12] "Serum uric acid levels"
[13] "Diastolic blood pressure (alcohol consumption interaction)"
[14] "Mean arterial pressure (alcohol consumption interaction)"
[15] "Pulse pressure (alcohol consumption interaction)"
[16] "Systolic blood pressure (alcohol consumption interaction)"
[17] "Bipolar disorder (body mass index interaction)"
[18] "Breast cancer (estrogen-receptor negative, progesterone-receptor negative, and hu
[19] "Fractional exhaled nitric oxide (childhood)"
[20] "Glycated hemoglobin levels"

```

```
> nomatch = cattra[is.na(catDO)]
> unique(nomatch)[1:5]

[1] "Resistin levels " "Asthma and hay fever"
[3] "Lipid traits" "Musician's dystonia"
[5] "Cognitive decline (age-related)"
```

Manual searching shows that a number of these have very close matches.

6.2 Other phenotypic traits: Human Phenotype Ontology

Bioconductor does not possess an annotation package for phenotype ontology, but the standardized OBO format can be parsed and modeled into a graph.

```
> hpobo = gzfile(dir(system.file("obo", package="gwascat"), pattern="hpo", full=TRUE))
> HPOgraph = obo2graphNEL(hpobo)
> close(hpobo)
```

The phenotypic terms are obtained via:

```
> hpoterms = unlist(nodeData(HPOgraph, nodes(HPOgraph), "name"))
> hpoterms[1:10]
```

```
HP:0000001
  "All"
HP:0000002
  "Abnormality of body height"
HP:0000003
  "Multicystic kidney dysplasia"
HP:0000004
  "Onset and clinical course"
HP:0000005
  "Mode of inheritance"
HP:0000006
  "Autosomal dominant inheritance"
HP:0000007
  "Autosomal recessive inheritance"
HP:0000008
  "Abnormality of female internal genitalia"
HP:0000009
  "Functional abnormality of the bladder"
HP:0000010
  "Recurrent urinary tract infections"
```

Exact hits to unmatched GWAS catalog traits exist:

```
> intersect(tolower(nomatch), tolower(hpoterms))

[1] "ischemic stroke"          "autism"
[3] "orthostatic hypotension"  "coronary artery calcification"
[5] "insomnia"                "scoliosis"
[7] "eating disorders"        "hypertriglyceridemia"
[9] "sagittal craniosynostosis" "glioma"
[11] "atrial fibrillation"     "glioblastoma"
[13] "stroke"                  "iga nephropathy"
[15] "nephropathy"            "freckling"
[17] "knee osteoarthritis"     "hearing impairment"
```

More work on formalization of trait terms is underway.

7 CADD scores

Kircher et al. (Kircher et al., 2014) define combined annotation-dependent depletion scores measuring variant pathogenicity in an integrative way. Small requests to bind scores for SNV to GRanges can be resolved through HTTP; large requests can be carried out on a local tabix-indexed selection from their archive.

```
> g3 = as(gwrngs19, "GRanges")
> bg3 = bindcadd_snv( g3[which(seqnames(g3)=="chr3")][1:20] )
> inds = ncol(mcols(bg3))
> bg3[, (inds-3):inds]
```

This requires cooperation of network interface and server, so we don't evaluate in vignette build but on 1 Apr 2014 the response was:

GRanges with 20 ranges and 4 metadata columns:

	seqnames	ranges	strand		Ref	Alt
	<Rle>	<IRanges>	<Rle>		<character>	<character>
[1]	3	[109789570, 109789570]	*		A	G
[2]	3	[25922285, 25922285]	*		G	A
[3]	3	[109529550, 109529550]	*		T	C
[4]	3	[175055759, 175055759]	*		T	G
[5]	3	[191912870, 191912870]	*		C	T
...
[16]	3	[187716886, 187716886]	*		A	G
[17]	3	[160820524, 160820524]	*		G	C
[18]	3	[169518455, 169518455]	*		T	C


```

[19]      3 [179172979, 179172979]      * |      G      T
[20]      3 [171785168, 171785168]      * |      G      C
      CScore      PHRED
      <numeric> <numeric>
[1] -0.182763      3.110
[2] -0.289708      2.616
[3]  0.225373      5.216
[4] -0.205689      3.003
[5] -0.172189      3.161
...      ...      ...
[16] -0.019710      3.913
[17] -0.375183      2.235
[18] -0.695270      0.987
[19] -0.441673      1.949
[20]  0.231972      5.252
---
seqlengths:
      1      2      3      4 ...      21      22      X
249250621 243199373 198022430 191154276 ... 48129895 51304566 155270560

```

8 Appendix: Adequacy of location annotation

A basic question concerning the use of archived SNP identifiers is durability of the association between asserted location and SNP identifier. The `chklocs` function uses a current Bioconductor `SNPlocs` package to check this.

For example, to verify that locations asserted on chromosome 20 agree between the Bioconductor dbSNP image and the gwas catalog,

```

> if ("SNPlocs.Hsapiens.dbSNP.20120608" %in% installed.packages()[,1]) {
+   library(SNPlocs.Hsapiens.dbSNP.20120608)
+   suppressWarnings(chklocs("20", gwrngs19))
+ }

[1] TRUE

```

This is not a fast procedure but has succeeded for all chromosomes 1-22 when checked off line.

References

Martin Kircher, Daniela M Witten, Preti Jain, Brian J O’Roak, Gregory M Cooper, and Jay Shendure. A general framework for estimating the relative pathogenicity of human genetic variants. *Nat Genet*, Feb 2014. doi: 10.1038/ng.2892.

John D Osborne, Jared Flatow, Michelle Holko, Simon M Lin, Warren A Kibbe, Lihua Julie Zhu, Maria I Danila, Gang Feng, and Rex L Chisholm. Annotating the human genome with disease ontology. *BMC Genomics*, 10 Suppl 1:S6, Jan 2009. doi: 10.1186/1471-2164-10-S1-S6. URL <http://www.biomedcentral.com/1471-2164/10/S1/S6>.